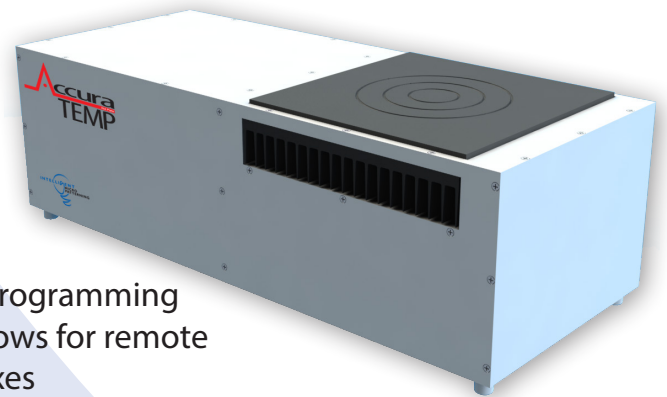


# Accura Hot Plate TEMP

**Patent pending technology provides exceptionally accurate temperature control, especially important when changing temperatures is necessary or active heating and cooling are required. With AccuraTEMP's easy to use, digitally controlled unit, the user is able to temperature cycle and very accurately control substrate temperature for dynamic processes.**

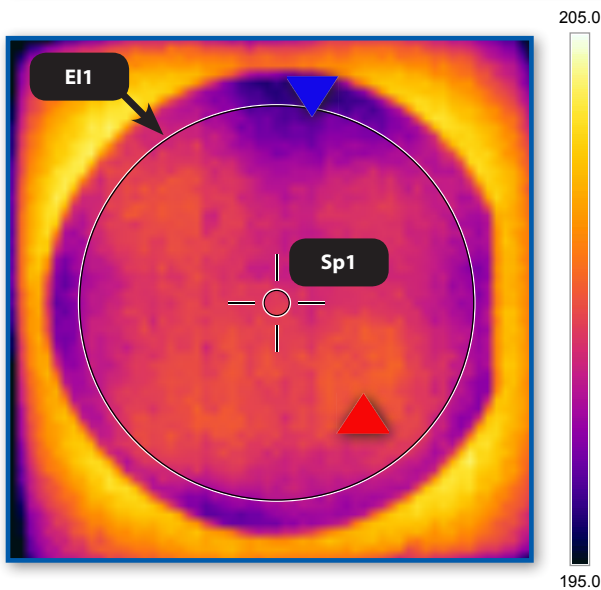
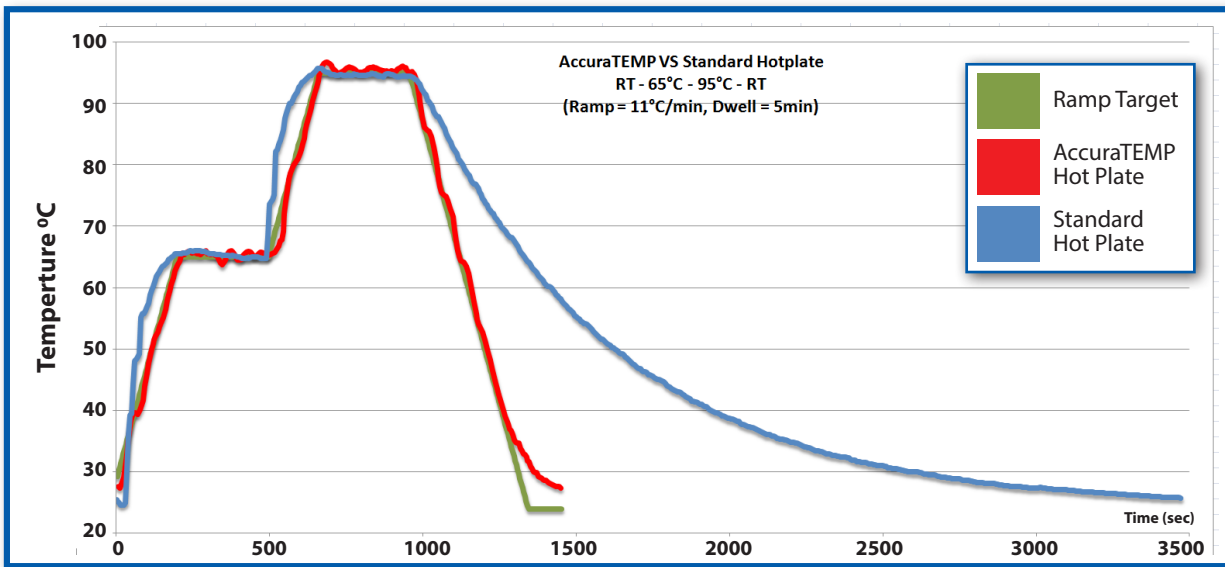
## **Standard Features include:**

- 150mm x 150mm active area — larger/custom sizes available
- Vacuum chucking ensures good contact between substrate and hot plate
- 110V/220V compatible
- 1 year parts and labor warranty
- Controlled heating and cooling at temperatures 15°C to 200°C
- Touch screen interface for easy programming
- Tethered touchpad controller allows for remote use in fume hoods and glove boxes
- Simple ASCII protocol for external control and integration via serial/ethernet interface
- Programmable heat and cool ramp rates



## **Ideal Applications**

- SU8 Processing
- Resist Flowing for Sloping/Lens Fabrication
- Thick Resist Materials
- Non-photoresist application where both accurate heating and cooling is required in steps of 1°C



### MEASUREMENTS

E1 (area within wafer)		°C
Max		200.4
Min		196.3
Average		199.1
Sp1 (center of wafer)		199.4

### AccuraTEMP Hot Plate Specifications Chart

Size	Standard model available for 150mm. Larger sizes can be quoted as custom projects.
Temperature Uniformity	+/-1.0% of setpoint
Temperature Control	Digital control, adjustable in steps of 1°C
Timer	Timer, settings to 999 minutes, single setpoint and up to 10 steps per program
Interface	Serial and Ethernet interfaces
Temperature range	15-200°C
Programmable Storage	Max program based on storage used
<b>Facility Requirements:</b>	
Voltage	110 or 240 VAC/ 50/60 Hz
Max Current	8 amps
Power Consumption	1000W
Weight	11.5 kg
Dimensions	200mm x 500mm x 175mm
Vacuum	660mm Hg vac, 0.6 m <sup>3</sup> /min



Contact your local Sales representative for more information.

#### Global Headquarters:

9790 16th Street North  
St. Petersburg, FL 33716  
T: 727-522-0334  
www.intelligentmp.com  
info@intelligentmp.com

#### Worldwide Offices:

USA, Canada, The Netherlands, UK,  
Germany, France, Italy, Russia, Israel,  
Korea, Taiwan, India, Singapore, China,  
Turkey, South America, Australia.